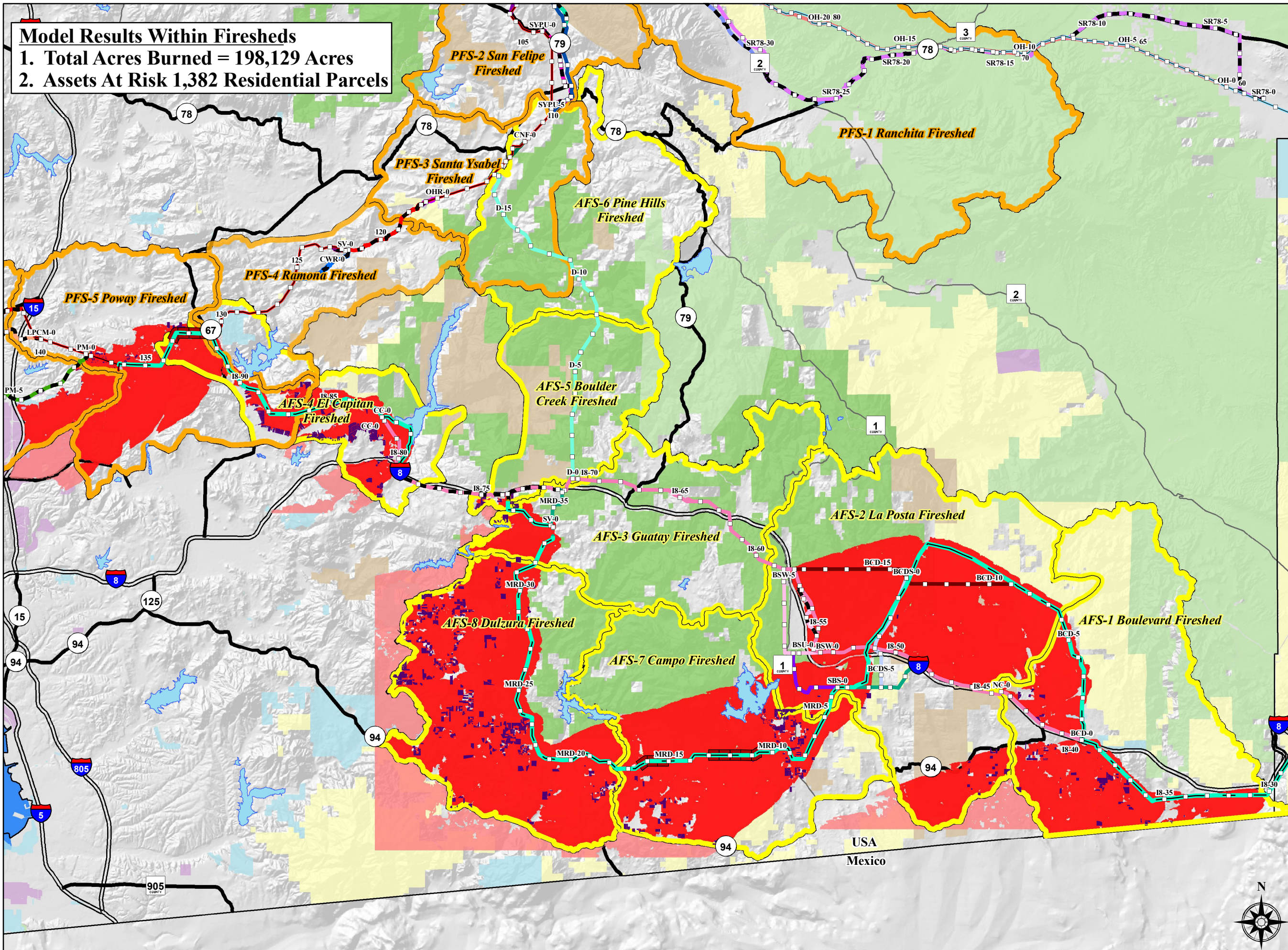


Model Results Within Firesheds

- 1. Total Acres Burned = 198,129 Acres
- 2. Assets At Risk 1,382 Residential Parcels

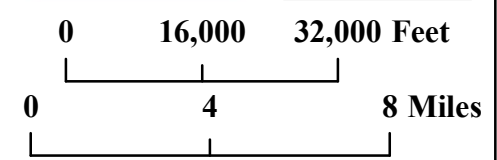


- Proposed Project and Alternative Routes**
- Environmentally Superior Southern Route, Overhead Portion
  - Proposed Project Overhead 500kV
  - Proposed Project Overhead 230kV
  - Proposed Project Underground 230kV
  - Modified Route D Alternative
  - Oak Hollow Road Alternative, Overhead Portion
  - Oak Hollow Road Alternative, Underground Portion
  - Overhead 500 kV ABDSP within Existing ROW
  - Partial Underground ABDSP SR78 to S2 Alternative, Overhead Portion
  - Partial Underground ABDSP SR78 to S2 Alternative, Underground Portion
  - Pomerado Road to Miramar Area North Alternative, Overhead Portion
  - Pomerado Road to Miramar Area North Alternative, Underground Portion
  - Route D Alternative
  - San Vicente Road Transition Alternative, Overhead Portion
  - San Vicente Road Transition Alternative, Underground Portion
  - Santa Ysabel Existing ROW Alternative
  - Santa Ysabel Partial Underground Alternative, Overhead Portion
  - Santa Ysabel Partial Underground Alternative, Underground Portion
  - Santa Ysabel SR79 All Underground Alternative, Overhead Portion
  - Santa Ysabel SR79 All Underground Alternative, Underground Portion
  - Top of the World Substation Alternative
  - Black Mountain to Park Village Road Underground Alternative
  - Central South Substation Alternative
  - Chuck Wagon Road Alternative, Overhead Portion
  - Chuck Wagon Road Alternative, Underground Portion
  - CNF Existing 69 kV Route Alternative
  - Buckman Springs Underground Option
  - Campo North Option
  - Interstate 8 Alternative, Overhead Portion
  - South Buckman Springs Option
  - Interstate 8 Alternative, Underground Portion
  - West Buckman Springs Option
  - Los Peñasquitos Canyon Preserve-Mercy Road Alternative
  - SDG&E Mesa Grande Alternative

- Milepost
  - Road
  - Interstate
  - Proposed Project Firesheds
  - Alternative Routes Firesheds
  - Wildfire Containment Conflict Model - Minimum 1.5 mile Segments
  - Residential Asset at Risk
  - Extreme Fire Weather - Fire Behavior Trend Modeled within Firesheds
  - Extreme Fire Weather - Estimated Fire Perimeter - Limited Fuel Model Data
- Jurisdictional Land Ownership**
- U.S. Forest Service Land
  - Bureau of Land Management Land
  - Department of Defense Land
  - State Land
  - State Park
  - Tribal Land

**Aspen Environmental Group**

**Forester's Co-Op**  
Professional Forestry & GIS Services  
(530) 273-8326  
www.foreco-op.com



**Sunrise Powerlink Project**

Figure Ap.3E-12  
Final Environmentally Superior Southern Route, Overhead Portion Fire Behavior Trend Model 4 Burn Periods - Extreme Weather